



BREVITAL[®]

(methohexital sodium
for injection, USP)
Lyophilized Powder

PREPARATION & DOSING GUIDE

ANESTHESIOLOGY NEWS

PHARMACY PRACTICE NEWS

SAFETY INFORMATION

WARNING

Brevital should be used only in hospital or ambulatory care settings that provide for continuous monitoring of respiratory (e.g. pulse oximetry) and cardiac function. Immediate availability of resuscitative drugs and age- and size-appropriate equipment for bag/valve/mask ventilation and intubation and personnel trained in their use and skilled in airway management should be assured. For deeply sedated patients, a designated individual other than the practitioner performing the procedure should be present to continuously monitor the patient. (See WARNINGS)

Brevital[®] Sodium is a rapid, ultrashort-acting barbiturate anesthetic for intravenous use in adults, and for rectal and intramuscular use only in pediatric patients older than one month. Brevital[®] Sodium is contraindicated in patients in whom general anesthesia is contraindicated, in those with latent or manifest porphyria, or in patients with a known hypersensitivity to barbiturates. Intra-arterial injection of barbiturate solutions can result in necrosis, which may lead to gangrene and possible amputation and thereby should be avoided. Caution should be exercised in debilitated patients or patients with impaired function of respiratory, circulatory, renal, hepatic or endocrine systems and in those with severe anemia or those who are extremely obese. Side effects include but are not limited to circulatory depression, hypotension, respiratory depression (including apnea), skeletal muscle hyperactivity (twitching), seizures, emergence delirium, restlessness, anxiety, nausea, hiccups, emesis, coughing and pain at the injection site. Following massive exposure to any barbiturate, pulmonary edema, circulatory collapse with loss of peripheral vascular tone, and cardiac arrest may occur. Brevital[®] Sodium may be habit-forming.

BREVITAL® SODIUM *(methohexital sodium for injection, USP)*

A rapid, ultrashort-acting barbiturate anesthetic

INDICATION AND USAGE

Brevital® Sodium can be used in adults as follows:

- For *intravenous* induction of anesthesia prior to the use of other general anesthetic agents.
- For *intravenous* induction of anesthesia and as an adjunct to subpotent inhalational anesthetic agents (such as nitrous oxide in oxygen) for short surgical procedures; Brevital® Sodium may be given by infusion or intermittent injection.
- For use along with other parenteral agents, usually narcotic analgesics, to supplement subpotent inhalation anesthetic agents (such as nitrous oxide in oxygen) for longer surgical procedures.
- As *intravenous* anesthesia for short surgical, diagnostic, or therapeutic procedures associated with minimal painful stimuli (**see WARNINGS**).
- As an agent for inducing a hypnotic state.

Brevital® Sodium can be used in *pediatric patients older than 1 month* as follows:

- For *rectal* or *intramuscular* induction of anesthesia prior to the use of other general anesthetic agents.
- For *rectal* or *intramuscular* induction of anesthesia and as an adjunct to subpotent inhalational anesthetic agents for short surgical procedures.
- As *rectal* or *intramuscular* anesthesia for short surgical, diagnostic, or therapeutic procedures associated with minimal painful stimuli.

DOSAGE AND ADMINISTRATION

Preanesthetic medication is generally advisable. Brevital® Sodium may be used with any of the recognized preanesthetic medications.

Preparation of Solution—FOLLOW DILUTION INSTRUCTIONS EXACTLY. Solutions of Brevital® Sodium should be freshly prepared and used promptly.

- Reconstituted solutions of Brevital® Sodium are chemically stable at room temperature for 24 hours
- Latex-free, preservative-free, and sulfur-free
- MultiDose Vials (MDVs)

Recommended diluents based on route of administration:

Only mix with bacteriostatic-free diluent

Incompatible diluents: Lactated Ringer's Injection

Intermittent IV: 1% Solution

- Sterile Water for Injection
- 5% Dextrose
- 0.9% Sodium Chloride Injection

Continuous IV: 0.2% Solution

- 5% Dextrose
- 0.9% Sodium Chloride Injection

IM (Intramuscular): 5% Solution

- Sterile Water for Injection
- 0.9% Sodium Chloride Injection

Rectal: 1% Solution

- Sterile Water for Injection
- 5% Dextrose
- 0.9% Sodium Chloride Injection

SAFETY INFORMATION

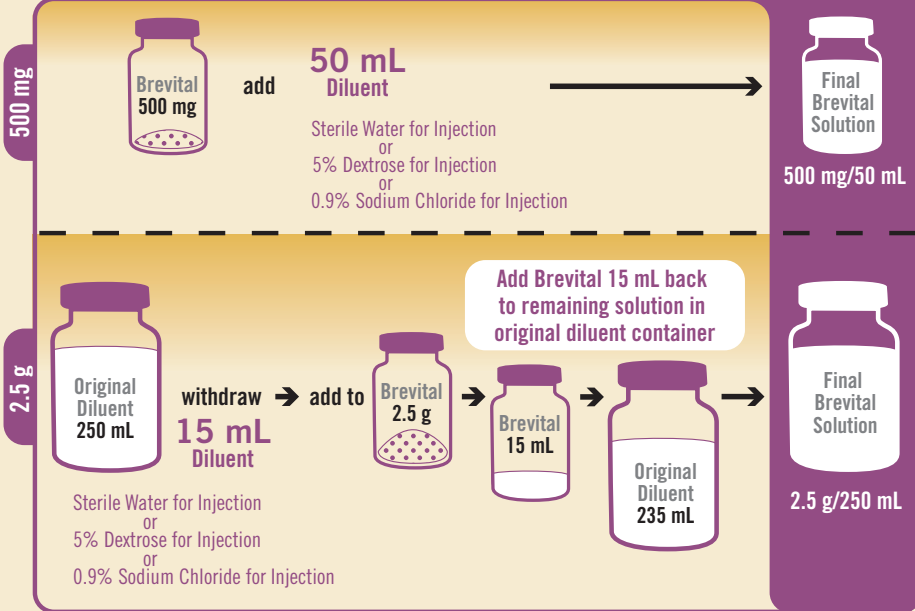
WARNING

Brevital should be used only in hospital or ambulatory care settings that provide for continuous monitoring of respiratory (e.g. pulse oximetry) and cardiac function. Immediate availability of resuscitative drugs and age- and size-appropriate equipment for bag/valve/mask ventilation and intubation and personnel trained in their use and skilled in airway management should be assured. For deeply sedated patients, a designated individual other than the practitioner performing the procedure should be present to continuously monitor the patient. (See WARNINGS)

Brevital® Sodium is contraindicated in patients in whom general anesthesia is contraindicated, in those with latent or manifest porphyria, or in patients with a known hypersensitivity to barbiturates. Intra-arterial injection of barbiturate solutions can result in necrosis, which may lead to gangrene and possible amputation and thereby should be avoided. Caution should be exercised in debilitated patients or patients with impaired function of respiratory, circulatory, renal, hepatic or endocrine systems and in those with severe anemia or those who are extremely obese. Side effects include but are not limited to circulatory depression, hypotension, respiratory depression (including apnea), skeletal muscle hyperactivity (twitching), seizures, emergence delirium, restlessness, anxiety, nausea, hiccups, emesis, coughing and pain at the injection site. Following massive exposure to any barbiturate, pulmonary edema, circulatory collapse with loss of peripheral vascular tone, and cardiac arrest may occur. Brevital® Sodium may be habit-forming.

Please see full prescribing information attached.

Intermittent IV or Rectal Administration—Dilute to a 1% Solution for a Final Concentration of 10 mg/mL



DILUTION INSTRUCTIONS

HOW TO MIX BREVITAL® SODIUM

— **FOR INTRAVENOUS (IV) ADMINISTRATION**

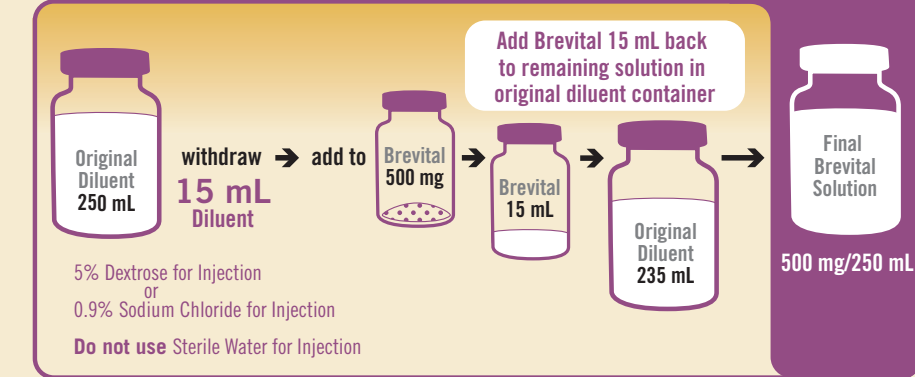
— **FOR RECTAL ADMINISTRATION**

1% solutions (10 mg/mL) should be prepared for intermittent IV and rectal use. Contents of the 500 mg and 2.5 g vials should be diluted as described in the diagram.

Note: For diluting the Brevital® Sodium 2.5 g vial only, you will need to withdraw 15 mL of diluent from a separate 250 mL vial/bag of diluent (not provided with Brevital® Sodium).

When the first dilution is made with the Brevital® Sodium 2.5 g vial, the 15 mL of solution will be yellow. When further diluted to make 250 mL of a 1% solution, it must be *clear and colorless* or should not be used.

Continuous IV Drip Administration—Dilute to a 0.2% Solution for a Final Concentration of 2 mg/mL



HOW TO MIX BREVITAL® SODIUM

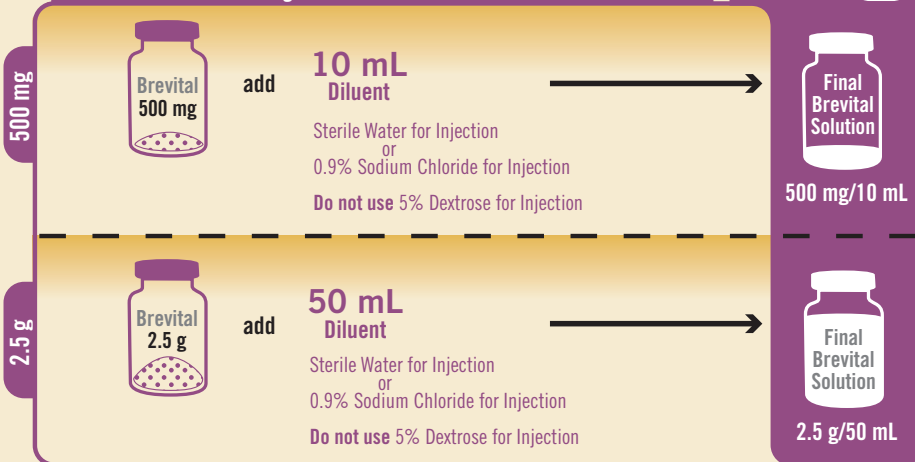
— **FOR CONTINUOUS IV DRIP ADMINISTRATION**

0.2% solutions (2 mg/mL) should be prepared for continuous IV drip.

Contents of the 500 mg vials should be diluted as described in the diagram.

Note: You will need to withdraw 15 mL of diluent from a separate 250 mL vial/bag of diluent (not provided with Brevital® Sodium).

IM Administration—Dilute to a 5% Solution for a Final Concentration of 50 mg/mL



HOW TO MIX BREVITAL® SODIUM

— **FOR INTRAMUSCULAR (IM) ADMINISTRATION**

5% solutions (50 mg/mL) should be prepared for intramuscular use. Contents of the 500 mg and 2.5 g vials should be diluted as described in the diagram.

FINAL SOLUTIONS MUST BE CLEAR AND COLORLESS OR SHOULD NOT BE USED

INDUCTION OF ANESTHESIA — Administration of Brevital® Sodium

Adults	Pediatric Patients (older than 1 month)	
IV (1% solution = 10 mg/mL)	IM (5% solution = 50 mg/mL)	RECTAL (1% solution = 10 mg/mL)
The usual dosage ranges from 1 to 1.5 mg/kg. Therefore, the dose required for induction may range from 50 to 120 mg or more, but averages about 70 mg	The usual dose ranges from 6.6 to 10 mg/kg	The usual dose is 25 mg/kg
Rapid induction of sleep (<1 minute)	Onset of sleep occurs in 2 to 10 minutes	Onset of sleep occurs in 5 to 15 minutes
For induction of anesthesia, a 1% solution is administered at a rate of about 1 mL/5 seconds		
The induction dose usually provides anesthesia for 5 to 7 minutes.		
Gaseous anesthetics and/or skeletal muscle relaxants may be administered concomitantly		

MAINTENANCE OF ANESTHESIA — Administration of Brevital® Sodium

Adults	
INTERMITTENT IV INJECTIONS (1% solution = 10 mg/mL)	CONTINUOUS IV DRIP (0.2% solution = 2 mg/mL)
20 to 40 mg (2-4 mL) every 4 to 7 minutes	3 mL/min (1 drop/second). Rate of flow must be individualized for each patient
For longer surgical procedures, gradual reduction in the rate of administration is recommended	

ADULT DOSE COMPARISON FOR RAPID-ACTING ANESTHETICS

Characteristics of Injectable Agents for Anesthesia Induction and Maintenance¹⁻⁶

Agent	Onset of Action (minutes)	Clinical Duration (minutes)	Usual Adult Doses for Anesthesia	
			Induction	Maintenance
Etomidate ²	<1	3-5	0.2 to 0.6 mg/kg IV (average 0.3 mg/kg IV)	Smaller increments of induction dose IV (must be individualized)
Ketamine ³	<1	5-10	1 to 2 mg/kg IV	0.5 to 2 mg/kg IV (50%-100% of induction dose) as needed
Methohexital ¹	<1	5-7	50 to 120 mg IV <i>or</i> 1 to 1.5 mg/kg IV	20 to 40 mg IV as needed (usually every 4-7 minutes) <i>or</i> 6 mg/minute IV by continuous infusion
Propofol ^{4,5}	<1	5-10	1 to 2.5 mg/kg IV <i>or</i> 20 to 40 mg IV every 10 seconds until onset of anesthesia	0.05 to 0.2 mg/kg/minute IV by continuous infusion <i>or</i> 20 to 50 mg IV in increments as needed
Thiopental ⁶	<1	5-8	(Slow induction—recommended) 50 to 75 mg IV <i>or</i> 3 to 5 mg/kg every 20 to 40 seconds (Rapid induction) Total dose estimated, then injected in 2 to 4 fractional doses Initial dose of 210 to 280 mg (3-4 mg/kg) in average adult (70 kg)	25 to 50 mg IV as needed (whenever the patient moves)

Dosage is highly individualized; therefore, dosage recommendation cannot be absolutely fixed—age of patient and clinical situation should be considered.

SAFETY INFORMATION

WARNING

Brevital should be used only in hospital or ambulatory care settings that provide for continuous monitoring of respiratory (e.g. pulse oximetry) and cardiac function. Immediate availability of resuscitative drugs and age- and size-appropriate equipment for bag/valve/mask ventilation and intubation and personnel trained in their use and skilled in airway management should be assured. For deeply sedated patients, a designated individual other than the practitioner performing the procedure should be present to continuously monitor the patient. (See WARNINGS)

Brevital® Sodium is a rapid, ultrashort-acting barbiturate anesthetic for intravenous use in adults, and for rectal and intramuscular use only in pediatric patients older than one month. Brevital® Sodium is contraindicated in patients in whom general anesthesia is contraindicated, in those with latent or manifest porphyria, or in patients with a known hypersensitivity to barbiturates. Intra-arterial injection of barbiturate solutions can result in necrosis, which may lead to gangrene and possible amputation and thereby should be avoided. Caution should be exercised in debilitated patients or patients with impaired function of respiratory, circulatory, renal, hepatic or endocrine systems and in those with severe anemia or those who are extremely obese. Side effects include but are not limited to circulatory depression, hypotension, respiratory depression (including apnea), skeletal muscle hyperactivity (twitching), seizures, emergence delirium, restlessness, anxiety, nausea, hiccups, emesis, coughing and pain at the injection site. Following massive exposure to any barbiturate, pulmonary edema, circulatory collapse with loss of peripheral vascular tone, and cardiac arrest may occur. Brevital® Sodium may be habit-forming.

Please see full prescribing information attached.

TO ORDER BREVITAL® SODIUM (*methohexital sodium for injection, USP*)

NDC	Strength	Vial Size	Fill Volume	Pack Size	Storage
42023-105-01	500 mg	50 mL MDV	500 mg Lyophilized Powder	1 vial	20°-25°C (68°-77°F)
42023-106-01	2.5 g	50 mL MDV	2.5 g Lyophilized Powder	1 vial	20°-25°C (68°-77°F)

Brevital® Sodium is available through wholesalers and distributors.
Brevital® Sodium is a controlled substance classified as a Schedule **IV** drug.

For more information about Brevital® Sodium, please visit
www.brevital.com
 or call JHP Customer Service at 877-JHP-4JHP (877-547-4547).

For Intravenous Use in Adults
For Rectal and Intramuscular Use Only
in Pediatric Patients

**BREVITAL®
SODIUM** 
 (methohexital sodium
for injection, USP)
 Lyophilized Powder

JHP Medical Affairs

*For medical information inquiries,
to report an adverse experience or
a product complaint:*

Tel: Toll-free: 866.923.2547

Fax: 973.658.3585

Email:

medical.affairs@jhppharma.com

JHP Customer Service

*For order inquiries, please
contact us at:*

customerservice@jhppharma.com

Customer Service:

Tel: Toll-free: 877.547.4547

Fax: Toll-free: 866.923.4547

References

1. JHP Pharmaceuticals. Brevital® Sodium. Rochester, MI. January 2009.
2. Bedford Laboratories. Etomidate Injection. Bedford, OH. March 2004.
3. JHP Pharmaceuticals. Ketalar (ketamine hydrochloride for injection). Rochester, MI. February 2009.
4. AstraZeneca Pharmaceuticals LP. Diprivan (propofol) Injectable Emulsion. Wilmington, DE. August 2005.
5. AHFS Drug Information® Propofol. Bethesda, MD. 2010.
6. AHFS Drug Information®. Thiopental Sodium. Bethesda, MD. 2010.



Morris Corporate Center 2
One Upper Pond Road
Building D, 3rd Floor
Parsippany, NJ 07054
Tel: 973.658.3530
web: www.jhppharma.com

BREVITAL® SODIUM METHOHEXITAL SODIUM FOR INJECTION, USP



3003014B
266

For Intravenous Use in Adults
For Rectal and Intramuscular Use Only in Pediatric Patients

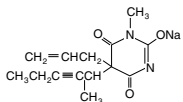
WARNING

Brevital should be used only in hospital or ambulatory care settings that provide for continuous monitoring of respiratory (e.g. pulse oximetry) and cardiac function. Immediate availability of resuscitative drugs and age- and size-appropriate equipment for bag/valve/mask ventilation and intubation and personnel trained in their use and skilled in airway management should be assured. For deeply sedated patients, a designated individual other than the practitioner performing the procedure should be present to continuously monitor the patient. (See WARNINGS)

DESCRIPTION

Brevital® Sodium (Methohexital Sodium for Injection, USP) is 2,4,6,1-(1*H*, 3*H*, 5*H*)-Pyrimidinetrione, 1-methyl-5-(1-methyl-2-pentyl)-5-(2-propenyl)-, (-), monosodium salt and has the empirical formula C₁₄H₁₇N₂NaO₃. Its molecular weight is 284.23.

The structural formula is as follows:



Methohexital sodium is a rapid, ultrashort-acting barbiturate anesthetic. Methohexital sodium for injection is a freeze-dried, sterile, nonpyrogenic mixture of methohexital sodium with 6% anhydrous sodium carbonate added as a buffer. It contains not less than 90% and not more than 110% of the labeled amount of methohexital sodium. It occurs as a white, freeze-dried plug that is freely soluble in water. This product is oxygen sensitive. The pH of the 1% solution is between 10 and 11; the pH of the 0.2% solution in 5% dextrose is between 9.5 and 10.5.

Methohexital sodium may be administered by direct intravenous injection or continuous intravenous drip, intramuscular or rectal routes (see PRECAUTIONS—Pediatric Use). Reconstituting instructions vary depending on the route of administration (see DOSAGE AND ADMINISTRATION).

CLINICAL PHARMACOLOGY

Compared with thiethylal and thiopental, methohexital is at least twice as potent on a weight basis, and its duration of action is only about half as long. Although the metabolic fate of methohexital in the body is not clear, the drug does not appear to concentrate in fat depots to the extent that other barbiturate anesthetics do. Thus, cumulative effects are fewer and recovery is more rapid with methohexital than with thiobarbiturates. In experimental animals, the drug cannot be detected in the blood 24 hours after administration.

Methohexital differs chemically from the established barbiturate anesthetics in that it contains no sulfur. Little analgesia is conferred by barbiturates; their use in the presence of pain may result in excitation.

Intravenous administration of methohexital results in rapid uptake by the brain (within 30 seconds) and rapid induction of sleep.

Following intramuscular administration to pediatric patients, the onset of sleep occurs in 2 to 10 minutes. A plasma concentration of 3 µg/mL was achieved in pediatric patients 15 minutes after an intramuscular dose (10 mg/kg) of a 5% solution. Following rectal administration to pediatric patients, the onset of sleep occurs in 5 to 15 minutes. Plasma methohexital concentrations achieved following rectal administration tend to increase both with dose and with the use of more dilute solution concentrations when using the same dose. A 25 mg/kg dose of a 1% methohexital solution yielded plasma concentrations of 6.9 to 7.9 µg/mL 15 minutes after dosing. The absolute bioavailability of rectal methohexital sodium is 17%.

With single doses, the rate of redistribution determines duration of pharmacologic effect. Metabolism occurs in the liver through demethylation and oxidation. Side-chain oxidation is the most important biotransformation involved in termination of biologic activity. Excretion occurs via the kidneys through glomerular filtration.

INDICATIONS AND USAGE

Brevital Sodium can be used in adults as follows:

- For intravenous induction of anesthesia prior to the use of other general anesthetic agents.
 - For intravenous induction of anesthesia and as an adjunct to suboptimal inhalational anesthetic agents (such as nitrous oxide in oxygen) for short surgical procedures; Brevital Sodium may be given by infusion or intermittent injection.
 - For use along with other parenteral agents, usually narcotic analgesics, to supplement suboptimal inhalational anesthetic agents (such as nitrous oxide in oxygen) for longer surgical procedures.
 - As intravenous anesthesia for short surgical, diagnostic, or therapeutic procedures associated with minimal painful stimuli (see WARNINGS).
 - As an agent for inducing a hypnotic state.
- Brevital Sodium can be used in pediatric patients older than 1 month as follows:
- For rectal or intramuscular induction of anesthesia prior to the use of other general anesthetic agents.
 - For rectal or intramuscular induction of anesthesia and as an adjunct to suboptimal inhalational anesthetic agents for short surgical procedures.
 - As rectal or intramuscular anesthesia for short surgical, diagnostic, or therapeutic procedures associated with minimal painful stimuli.

CONTRAINDICATIONS

Brevital Sodium is contraindicated in patients in whom general anesthesia is contraindicated, in those with latent or manifest porphyria, or in patients with a known hypersensitivity to barbiturates.

WARNINGS

See boxed Warning.

As with all potent anesthetic agents and adjuncts, Brevital should be used only in hospital or ambulatory care settings that provide for continuous monitoring of respiratory (e.g. pulse oximetry) and cardiac function. Immediate availability of resuscitative drugs and age- and size-appropriate equipment for bag/valve/mask ventilation and intubation and personnel trained in their use and skilled in airway management should be assured. For deeply sedated patients, a designated individual other than the practitioner performing the procedure should be present to continuously monitor the patient.

Maintenance of a patent airway and adequacy of ventilation must be ensured during induction and maintenance of anesthesia with methohexital sodium solution. Laryngospasm is common during induction with all barbiturates and may be due to a combination of secretions and accentuated reflexes following induction or may result from painful stimuli during light anesthesia. Apnea/hyperventilation may be noted during induction, which may impair pulmonary ventilation; the duration of apnea may be longer than that produced by other barbiturate anesthetics. Cardiorespiratory arrest may occur.

This prescribing information describes intravenous use of methohexital sodium in adults. It also discusses intramuscular and rectal administration in pediatric patients older than one month. Although the published literature discusses intravenous administration in pediatric patients, the safety and effectiveness of intravenous administration of methohexital sodium in pediatric patients have not been established in well-controlled, prospective studies. (See PRECAUTIONS—Pediatric Use)

Seizures may be elicited in subjects with a previous history of convulsive activity, especially partial seizure disorders.

Because the liver is involved in demethylation and oxidation of methohexital and because barbiturates may enhance preexisting circulatory depression, severe hepatic dysfunction, severe cardiovascular instability, or a shock-like condition may be reason for selecting another induction agent.

Prolonged administration may result in cumulative effects, including extended somnolence, protracted unconsciousness, and respiratory and cardiovascular depression. Respiratory depression in the presence of an impaired airway may lead to hypoxia, cardiac arrest, and death.

The CNS-depressant effect of Brevital Sodium may be additive with that of other CNS depressants, including ethyl alcohol and propylene glycol.

DANGER OF INTRA-ARTERIAL INJECTION—Unintended intra-arterial injection of barbiturate solutions may be followed by the production of platelet aggregates and thrombosis, starting in arterioles distal to the site of injection. The resulting necrosis may lead to gangrene, which may require amputation. The first sign in conscious patients may be a complaint of fiery burning that roughly follows the distribution path of the injected artery; if noted, the injection should be stopped immediately and the situation reevaluated. Transient blanching may or may not be noted very early; blochy cyanosis and dark discoloration may then be the first sign in anesthetized patients. There is no established treatment other than prevention. The following should be considered prior to injection:

- The extent of injury is related to concentration. Concentrations of 1% methohexital will usually suffice; higher concentrations should ordinarily be avoided.
 - Check the infusion to ensure that the catheter is in the lumen of a vein before injection. Injection through a running intravenous infusion may enhance the possibility of detecting arterial placement; however, it should be remembered that the characteristic bright-red color of arterial blood is often altered by contact with drugs. The possibility of aberrant arteries should always be considered.
- Postinjury arterial injection of vasodilators and/or arterial infusion of parenteral fluids are generally regarded to be of no value in altering outcome. Animal experiments and published individual case reports combined with a variety of arteriolar irritants, including barbiturates, suggest that 1 or more of the following may be of benefit in reducing the area of necrosis:
- Arterial injection of heparin at the site of injury, followed by systemic anticoagulation.
 - Sympathetic blockade (or brachial plexus blockade in the arm).
 - Intra-arterial glucocorticoid injection at the site of injury, followed by systemic steroids.
 - A case report (nonbarbiturate injury) suggests that intra-arterial urokinase may promote fibrinolysis, even if administered late in treatment.

If extravasation is noted during injection of methohexital, the injection should be discontinued until the situation is remedied. Local irritation may result from extravasation; subcutaneous swelling may also serve as a sign of arterial or venous placement of the catheter.

PRECAUTIONS

General—All routes of administration of Brevital Sodium are often associated with hiccups, coughing, and/or muscle twitching, which may also impair pulmonary ventilation.

Following induction, temporary hypotension and tachycardia may occur.

Recovery from methohexital anesthesia is rapid and smooth. The incidence of postoperative nausea and vomiting is low if the drug is administered to fasting patients. Postanesthetic shivering has occurred in a few instances.

The usual precautions taken with any barbiturate anesthetic should be observed with Brevital Sodium. The drug should be used with caution in patients with asthma, obstructive pulmonary disease, severe hypertension or hypotension, myocardial disease, congestive heart failure, severe anemia, or extreme obesity.

Methohexital sodium should be used with extreme caution in patients in status asthmaticus.

Caution should be exercised in debilitated patients or in those with impaired function of respiratory, circulatory, renal, hepatic, or endocrine systems.

Information for Patients—When appropriate, patients should be instructed as to the hazards of drowsiness that may follow use of Brevital Sodium.

Outpatients should be released in the company of another individual, and no skilled activities, such as operating machinery or driving a motor vehicle, should be engaged in for 8 to 12 hours.

Laboratory Tests—BSP and liver function studies may be influenced by administration of a single dose of barbiturates.

Drug Interactions—Prior chronic administration of barbiturates or phenytoin (e.g. for seizure disorder) appears to reduce the effectiveness of Brevital Sodium. Barbiturates may influence the metabolism of other concomitantly used drugs, such as phenytoin, halothane, anticoagulants, corticosteroids, ethyl alcohol, and propylene glycol-containing solutions.

Carcinogenesis, Mutagenesis, Impairment of Fertility—Studies in animals to evaluate the carcinogenic and mutagenic potential of Brevital Sodium have not been conducted. Reproduction studies in animals have revealed no evidence of impaired fertility.

Usage in Pregnancy—Pregnancy Category B—Reproduction studies have been performed in rabbits and rats at doses up to 4 and 7 times the human dose respectively and have revealed no evidence of harm to the fetus due to methohexital sodium. There are, however, no adequate and well-controlled studies in pregnant women. Because animal reproduction studies are not always predictive of human response, this drug should be used during pregnancy only if clearly needed.

Labor and Delivery—Brevital Sodium has been used in cesarean section delivery but, because of its solubility and lack of protein binding, it readily and rapidly traverses the placenta.

Nursing Mothers—Caution should be exercised when Brevital Sodium is administered to a nursing woman.

Pediatric Use—The safety and effectiveness of methohexital sodium in pediatric patients below the age of 1 month have not been established. Seizures may be elicited in subjects with a previous history of convulsive activity, especially partial seizure disorders. Apnea has been reported following dosing with methohexital regardless of the route of administration used. Studies using methohexital sodium intravenously in pediatric patients have been reported in the published literature. This literature is not adequate to establish the safety and effectiveness of intravenous administration of methohexital sodium in pediatric patients. Due to a variety of limitations such as study design, biopharmaceutical issues, and the wide range of effects observed with similar doses of intravenous methohexital, additional studies of intravenous methohexital in pediatric patients are necessary before this route can be recommended in pediatric patients. (See WARNINGS)

Geriatric Use—Clinical studies of Brevital did not include sufficient numbers of subjects aged 65 and over to determine whether they respond differently from younger subjects. Other reported clinical experience has not identified differences in responses between the elderly and younger patients. Elderly subjects may commonly have conditions in which methohexital should be used cautiously such as obstructive pulmonary disease, severe hypertension or hypotension, preexisting circulatory depression, myocardial disease, congestive heart failure, or severe anemia. Caution should be exercised in debilitated patients or in those with impaired function of respiratory, circulatory, renal, hepatic, or endocrine systems (see WARNINGS, PRECAUTIONS AND ADVERSE REACTIONS). Barbiturates may influence the metabolism of other concomitantly used drugs that are commonly taken by the elderly, such as anticoagulants and corticosteroids. In general, dose selection for an elderly patient should be cautious, usually starting at the low end of the dosing range, reflecting the greater frequency of decreased hepatic, renal, or cardiac function, and of concomitant disease or other drug therapy (see PRECAUTIONS-Drug Interactions).

ADVERSE REACTIONS

Side effects associated with Brevital Sodium are extensions of pharmacologic effects and include:

Cardiovascular—Circulatory depression, thrombophlebitis, hypotension, tachycardia, peripheral vascular collapse, and convulsions in association with cardiorespiratory arrest

Respiratory—Respiratory depression (including apnea), cardiorespiratory arrest, laryngospasm, bronchospasm, hiccups, and dyspnea

Neurologic—Skeletal muscle hyperactivity (twitching), injury to nerves adjacent to injection site, and seizures

Psychiatric—Emergence delirium, restlessness, and anxiety may occur, especially in the presence of postoperative pain

Gastrointestinal—Nausea, emesis, abdominal pain, and liver function tests abnormal

Allergic—Erythema, pruritus, urticaria, and cases of anaphylaxis have been reported rarely

Other—Other adverse reactions include pain at injection site, salivation, headache, and rhinitis

For medical advice about adverse reactions contact your medical professional. To report SUSPECTED ADVERSE REACTIONS, contact JHP at 1-866-923-2547 or MEDWATCH at 1-800-FDA-1088 (1-800-332-1088) or <http://www.fda.gov/medwatch/>.

DRUG ABUSE AND DEPENDENCE

Controlled Substance—Brevital Sodium is a Schedule IV drug.

Brevital Sodium may be habit-forming.

OVERDOSAGE

Signs and Symptoms—The onset of toxicity following an overdose of intravenously administered methohexital will be within seconds of the infusion. If methohexital is administered rectally or is ingested, the onset of toxicity may be delayed. The manifestations of an ultrashort-acting barbiturate in overdose include central nervous system depression, respiratory depression, hypotension, loss of peripheral vascular resistance, and muscular hyperactivity ranging from twitching to convulsive-like movements. Other findings may include convulsions and allergic reactions. Following massive exposure to any barbiturate, pulmonary edema, circulatory collapse with loss of peripheral vascular tone, and cardiac arrest may occur.

Treatment—To obtain up-to-date information about the treatment of overdose, a good resource is your certified Regional Poison Control Center. Telephone numbers of certified poison control centers are listed in the Physicians' Desk Reference (PDR). In managing overdose, consider the possibility of multiple drug overdoses, interaction among drugs, and unusual drug kinetics in your patient.

Establish an airway and ensure oxygenation and ventilation. Resuscitative measures should be initiated promptly. For hypotension, intravenous fluids should be administered and the patient's legs raised. If desirable increase in blood pressure is not obtained, vasopressor and/or inotropic drugs may be used as dictated by the clinical situation.

For convulsions, diazepam intravenously and phenytoin may be required. If the seizures are refractory to diazepam and phenytoin, general anesthesia and paralysis with a neuromuscular blocking agent may be necessary.

Protect the patient's airway and support ventilation and perfusion. Meticulously monitor and maintain, within acceptable limits, the patient's vital signs, blood gases, serum electrolytes, etc. Absorption of drugs from the gastrointestinal tract may be decreased by giving activated charcoal, which, in many cases, is more effective than emesis or lavage; consider charcoal instead of or in addition to gastric emptying. Repeated doses of charcoal over time may hasten elimination of some drugs that have been absorbed. Safeguard the patient's airway when employing gastric emptying or charcoal.

DOSAGE AND ADMINISTRATION

Facilities for assisting ventilation and administering oxygen are necessary adjuncts for all routes of administration of anesthesia. Since cardiorespiratory arrest may occur, patients should be observed carefully during and after use of Brevital Sodium. Age- and size-appropriate resuscitative equipment (ie, intubation and cardiovascular equipment, oxygen, suction, and a secure intravenous line) and personnel qualified in its use must be immediately available.

Preanesthetic medication is generally advisable. Brevital Sodium may be used with any of the recognized preanesthetic medications.

Preparation of Solution—FOLLOW DILUTING INSTRUCTIONS EXACTLY.

Solutions of Brevital Sodium should be freshly prepared and used promptly. Reconstituted solutions of Brevital Sodium are chemically stable at room temperature for 24 hours.

Diluents—DO NOT USE DILUENTS CONTAINING BACTERIOSTATS.

Preferred diluent: Sterile Water for Injection

Acceptable diluents: 5% Dextrose Injection (for IV or rectal administration only), 0.9% Sodium Chloride Injection

Incompatible diluents: Lactated Ringer's Injection

Dilution Instructions—1% solutions (10 mg/mL) should be prepared for intravenous use. Contents of vials should be diluted as follows:

FOR INTRAVENOUS ADMINISTRATION

Strength	Amount of Diluent to Be Added to the Contents of the Vial	For 1% methohexital solution
500 mg	50 mL	no further dilution needed
2.5 g	15 mL	add to 235 mL for 250 mL total volume

When the first dilution is made with the 2.5 g, the solution in the vial will be yellow. When further diluted to make a 1% solution, it must be clear and colorless or should not be used.

For continuous drip anesthesia, prepare a 0.2% solution by adding 500 mg of Brevital Sodium to 250 mL of diluent. For this dilution, either 5% glucose solution or isotonic (0.9%) sodium chloride solution is recommended instead of distilled water in order to avoid extreme hypotonicity.

For intramuscular administration, contents of the vials should be diluted as follows:

FOR INTRAMUSCULAR ADMINISTRATION

Strength	Amount of Diluent* to Be Added to the Contents of the Vial	Methohexital Concentration after Dilution
500 mg vial	10 mL	5% Solution (50 mg/mL)
2.5 g vial	50 mL	5% Solution (50 mg/mL)

*Sterile Water for Injection or 0.9% Sodium Chloride Injection only.

For rectal administration, contents of the vials should be diluted as follows:

FOR RECTAL ADMINISTRATION

Strength	Amount of Diluent to Be Added to the Contents of the Vial	Methohexital Concentration after Dilution
500 mg vial	50 mL	1% Solution (10 mg/mL)
2.5 g vial (larger vial needed)	250 mL	1% Solution (10 mg/mL)

Administration—Dosage is highly individualized; the drug should be administered only by those completely familiar with its quantitative differences from other barbiturate anesthetics.

Adults—Brevital Sodium is administered intravenously in a concentration of no higher than 1%. Higher concentrations markedly increase the incidence of muscular movements and irregularities in respiration and blood pressure.

Induction of anesthesia—For induction of anesthesia, a 1% solution is administered at a rate of about 1 mL/5 seconds. Gaseous anesthetics and/or skeletal muscle relaxants may be administered concomitantly. The dose required for induction may range from 50 to 120 mg or more but averages about 70 mg. The usual dosage in adults ranges from 1 to 1.5 mg/kg. The induction dose usually provides anesthesia for 5 to 7 minutes.

Maintenance of anesthesia—Maintenance of anesthesia may be accomplished by intermittent injections of the 1% solution or, more easily, by continuous intravenous drip of a 0.2% solution. Intermittent injections of about 20 to 40 mg (2 to 4 mL of a 1% solution) may be given as required, usually every 4 to 7 minutes. For continuous drip, the average rate of administration is about 3 mL of a 0.2% solution/minute (1 drop/second). The rate of flow must be individualized for each patient. For longer surgical procedures, gradual reduction to the rate of administration is recommended (see discussion of prolonged administration in WARNINGS). Other parenteral agents, usually narcotic analgesics, are ordinarily employed along with Brevital Sodium during longer procedures.

Pediatric Patients—Brevital Sodium is administered intramuscularly in a 5% concentration and administered rectally as a 1% solution.

Induction of anesthesia—For the induction of anesthesia by the intramuscular route of administration, the usual dose ranges from 6.6 to 10 mg/kg of the 5% concentration. For rectal administration, the usual dose for induction is 25 mg/kg using the 1% solution.

Parenteral drug products should be inspected visually for particulate matter and discoloration prior to administration, whenever solution and container permit.

COMPATIBILITY INFORMATION

Solutions of Brevital Sodium should not be mixed in the same syringe or administered simultaneously during intravenous infusion through the same needle with acid solutions, such as atropine sulfate, metocurine iodide, and succinylcholine chloride. Alteration of pH may cause free barbituric acid to be precipitated. Solubility of the soluble sodium salts of barbiturates, including Brevital Sodium, is maintained only at a relatively high (basic) pH.

Because of numerous requests from anesthesiologists for information regarding the chemical compatibility of these mixtures, the following chart contains information obtained from compatibility studies in which a 1% solution of Brevital Sodium was mixed with therapeutic amounts of agents whose solutions have a low (acid) pH.

Active Ingredient	Potency per mL	Volume Used	Time			Physical Change	
			Immediate	15 min		30 min	1 h
Brevital Sodium	10 mg	10 mL					CONTROL
Atropine Sulfate	1/150 gr	1 mL	None	Haze			
Atropine Sulfate	1/100 gr	1 mL	None	None	Ppt		Ppt
Succinylcholine chloride	0.5 mg	4 mL	None	None	None		Haze
Succinylcholine chloride	1 mg	4 mL	None	None	None		Haze
Metocurine iodide	0.5 mg	4 mL	None	None	None		Ppt
Metocurine iodide	1 mg	4 mL	None	None	None		Ppt
Scopolamine hydrobromide	1/120 gr	1 mL	None	None	None		None
Tubocurarine chloride	3 mg	4 mL	None	Haze			Haze

HOW SUPPLIED

Store at controlled room temperature (20° to 25°C) (68° to 77°F) [see USP].
Brevital® Sodium Vials: 500 mg (with 30 mg anhydrous sodium carbonate) are available as follows:

50-mL size, multiple dose—1's (NDC 42023-105-01)

The 2.5 g vials (with 150 mg anhydrous sodium carbonate) are available as follows:

50-mL size, multiple dose—1's (NDC 42023-106-01)

*In crystalline form.
Rx only
Prescribing Information as of January 2009.
Manufactured and Distributed by:
JHP Pharmaceuticals,
LLP
Rochester,
MI 48307

